

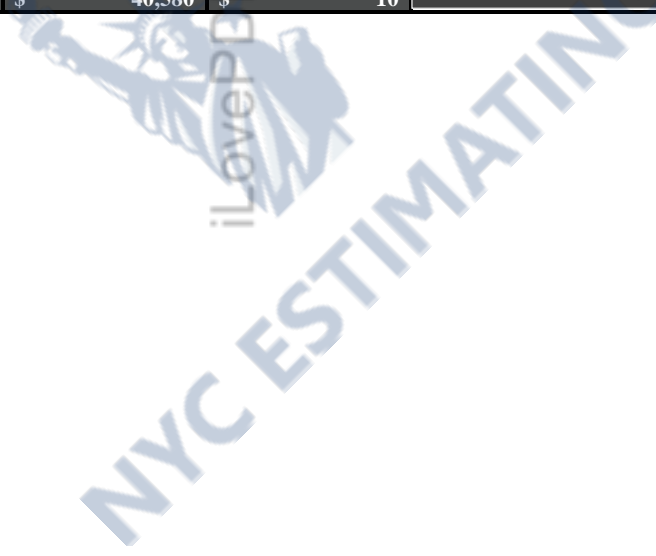
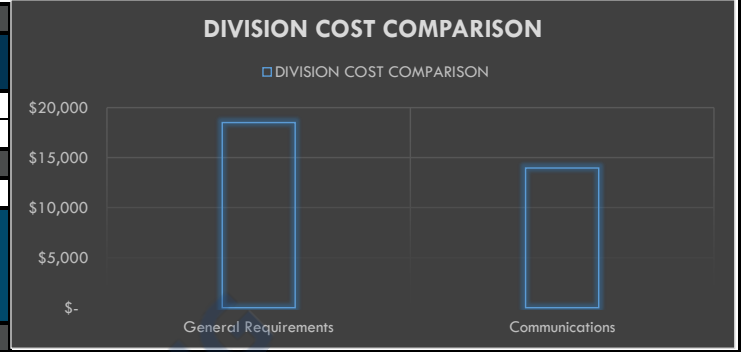
GENERAL SUMMARY

Prepared for:
Project ID:
Scope: Communications
No. Of Floors: 1
Date: 12/16/23



NYC ESTIMATING

BUILDING GSF		4,466	
DIVISION NO	DESCRIPTION	TOTAL DIV. COST	TOTAL DIV. COST (PER SF)
1000	General Requirements	\$ 18,500	\$ 4
27000	Communications	\$ 13,965	\$ 3
TOTAL TRADE COST		\$ 32,465	\$ 7
OVERHEAD AND PROFIT			
	15%	\$ 4,870	\$ 1.09
INSURANCE	3%	\$ 974	\$ 0
CONTINGENCY	5%	\$ 1,623	\$ 0
TAX	10.6%	\$ 648	\$ 1
SUGGESTED BID		\$ 40,580	\$ 10



DETAILED BREAKDOWN OF ITEMS

Prepared for:
Project ID:
Scope: Communications



NYC ESTIMATING
Date: **12/16/23**

SR #	Drawing #	Detail #	DESCRIPTION	UNIT	QUANTITY	WASTAGE	QUANTITY W/ WASTAGE	UNIT MANHOUR	HOURLY WAGE	LABOR COST	MAT. COST	UNIT COST	SUB COST
GENERAL REQUIREMENTS													
1			Permits	LS	1	0%	1	0.000	\$ -	\$ -	\$ -	\$ -	\$ -
2			Supervision and Coordination	LS	1	0%	1	0.000	\$ -	\$ -	\$ -	\$ 8,500.00	\$ 8,500.00
3			Submittals and Shop drawings	LS	1	0%	1	0.000	\$ -	\$ -	\$ -	\$ 1,500.00	\$ 1,500.00
4			Final Cleaning	LS	1	0%	1	0.000	\$ -	\$ -	\$ -	\$ 1,000.00	\$ 1,000.00
5			Mobilization Costs	LS	1	0%	1	0.000	\$ -	\$ -	\$ -	\$ 4,000.00	\$ 4,000.00
6			Temporary Control & Facilities	LS	1	0%	1	0.000	\$ -	\$ -	\$ -	\$ 2,500.00	\$ 2,500.00
7			Scaffolding	LS	1	0%	1	0.000	\$ -	\$ -	\$ -	\$ 1,000.00	\$ 1,000.00
												SUBTOTAL	\$ 18,500
COMMUNICATION													
TELECOMMUNICATION													
CONDUIT													
8			3/4" EMT Conduit	LF	39	10%	43	0.062	\$ 98.06	\$ 6.08	\$ 1.86	\$ 7.94	\$ 340.35
9			1-1/2" EMT Conduit	LF	290	10%	319	0.089	\$ 98.06	\$ 8.73	\$ 6.49	\$ 15.22	\$ 4,851.32
10			1-1/2" PVC SCH 40 Conduit	LF	79	10%	87	0.080	\$ 98.06	\$ 7.84	\$ 5.77	\$ 13.61	\$ 1,181.93
CONDUCTOR													
11			CAT 6e Cable (Installation Will Be Done By Owners Vender)	LF	3725	10%	4097	0.000	\$ 98.06	\$ -	\$ 0.25	\$ 0.25	\$ 1,024.33
J-HOOKS													
12			J-Hooks	EA	51	0%	51	0.200	\$ 98.06	\$ 19.61	\$ 16.59	\$ 36.20	\$ 1,852.34
DEVICES													
13			Data Outlet	EA	3	0%	3	0.160	\$ 98.06	\$ 15.69	\$ 6.79	\$ 22.48	\$ 67.44
			RJ45 Connector	EA	3	0%	3	0.080	\$ 98.06	\$ 7.84	\$ 1.10	\$ 8.94	\$ 26.83
			Face Plate	EA	3	0%	3	0.160	\$ 98.06	\$ 15.69	\$ 3.25	\$ 18.94	\$ 56.82
			Back Box	EA	3	0%	3	0.250	\$ 98.06	\$ 24.52	\$ 11.25	\$ 35.77	\$ 107.30
14			Data Outlet, Floor Mounted	EA	1	0%	1	0.385	\$ 98.06	\$ 37.75	\$ 115.21	\$ 152.96	\$ 452.96
			RJ45 Connector	EA	1	0%	1	0.080	\$ 98.06	\$ 7.84	\$ 1.10	\$ 8.94	\$ 26.83
			Face Plate	EA	1	0%	1	0.160	\$ 98.06	\$ 15.69	\$ 3.25	\$ 18.94	\$ 56.82
			Back Box	EA	1	0%	1	0.250	\$ 98.06	\$ 24.52	\$ 11.25	\$ 35.77	\$ 107.30
15			2 Port Data Outlet	EA	1	0%	1	0.200	\$ 98.06	\$ 19.61	\$ 9.90	\$ 29.51	\$ 89.41
			RJ45 Connector	EA	2	0%	2	0.080	\$ 98.06	\$ 7.84	\$ 1.10	\$ 8.94	\$ 26.83
			Face Plate	EA	1	0%	1	0.160	\$ 98.06	\$ 15.69	\$ 3.25	\$ 18.94	\$ 56.82
			Back Box	EA	1	0%	1	0.250	\$ 98.06	\$ 24.52	\$ 11.25	\$ 35.77	\$ 107.30
16			3 Port Data Outlet, Floor Mounted	EA	1	0%	1	0.200	\$ 98.06	\$ 19.61	\$ 18.50	\$ 38.11	\$ 116.61
			RJ45 Connector	EA	3	0%	3	0.080	\$ 98.06	\$ 7.84	\$ 1.10	\$ 8.94	\$ 26.83
			Face Plate	EA	1	0%	1	0.160	\$ 98.06	\$ 15.69	\$ 3.25	\$ 18.94	\$ 56.82
			Back Box	EA	1	0%	1	0.250	\$ 98.06	\$ 24.52	\$ 11.25	\$ 35.77	\$ 107.30
17			4 Port Data Outlet, Floor Mounted	EA	1	0%	1	0.250	\$ 98.06	\$ 24.52	\$ 24.16	\$ 48.67	\$ 147.23
			RJ45 Connector	EA	4	0%	4	0.080	\$ 98.06	\$ 7.84	\$ 1.10	\$ 8.94	\$ 26.83
			Face Plate	EA	1	0%	1	0.160	\$ 98.06	\$ 15.69	\$ 3.25	\$ 18.94	\$ 56.82
			Back Box	EA	1	0%	1	0.250	\$ 98.06	\$ 24.52	\$ 11.25	\$ 35.77	\$ 107.30
18	E2.0 & E3.0		5 Port Data Outlet	EA	2	0%	2	0.350	\$ 98.06	\$ 34.32	\$ 12.41	\$ 46.73	\$ 143.46
			RJ45 Connector	EA	10	0%	10	0.080	\$ 98.06	\$ 7.84	\$ 1.10	\$ 8.94	\$ 26.83
			Face Plate	EA	1	0%	1	0.160	\$ 98.06	\$ 15.69	\$ 3.25	\$ 18.94	\$ 56.82
			Back Box	EA	1	0%	1	0.250	\$ 98.06	\$ 24.52	\$ 11.25	\$ 35.77	\$ 107.30
19			5 Port Telephone Outlet	EA	2	0%	2	0.350	\$ 98.06	\$ 34.32	\$ 11.49	\$ 45.81	\$ 139.62
			RJ45 Connector	EA	10	0%	10	0.080	\$ 98.06	\$ 7.84	\$ 1.10	\$ 8.94	\$ 26.83
			Face Plate	EA	1	0%	1	0.160	\$ 98.06	\$ 15.69	\$ 3.25	\$ 18.94	\$ 56.82
			Back Box	EA	1	0%	1	0.250	\$ 98.06	\$ 24.52	\$ 11.25	\$ 35.77	\$ 107.30
20			Telephone Outlet	EA	1	0%	1	0.160	\$ 98.06	\$ 15.69	\$ 1.91	\$ 17.60	\$ 53.51
			RJ45 Connector	EA	1	0%	1	0.080	\$ 98.06	\$ 7.84	\$ 1.10	\$ 8.94	\$ 26.83
			Face Plate	EA	1	0%	1	0.160	\$ 98.06	\$ 15.69	\$ 3.25	\$ 18.94	\$ 56.82
			Back Box	EA	1	0%	1	0.250	\$ 98.06	\$ 24.52	\$ 11.25	\$ 35.77	\$ 107.30
21			Wireless Access Point	EA	2	0%	2	1.000	\$ 98.06	\$ 98.06	\$ 152.80	\$ 250.86	\$ 501.72
22			48 Port CAT 6 Patch Panel (By Owner)	EA	1	0%	1	0.000	\$ 98.06	\$ -	\$ -	\$ -	\$ -
23			SWING AWAY Data Rack Approx. 36" (By Owner)	EA	1	0%	1	0.000	\$ 98.06	\$ -	\$ -	\$ -	\$ -
24			3' X 6' X 3/4" Fire Treated Plywood Back Board	EA	1	0%	1	0.250	\$ 98.06	\$ 24.52	\$ 64.50	\$ 89.02	\$ 273.54
LOW VOLTAGE													
CONDUIT													
25			3/4" EMT Conduit	LF	186	10%	204	0.062	\$ 98.06	\$ 6.08	\$ 1.86	\$ 7.94	\$ 1,621.85
CONDUCTOR													
26			#18 CU THHN/THWN	LF	291	10%	321	0.005	\$ 98.06	\$ 0.49	\$ 0.10	\$ 0.59	\$ 189.21
27			#14 CU THHN/THWN	LF	80	10%	89	0.006	\$ 98.06	\$ 0.59	\$ 0.13	\$ 0.72	\$ 63.59
DEVICES													
28			Buzzer, EDWARDS #874-G5	EA	1	0%	1	0.500	\$ 98.06	\$ 49.03	\$ 237.05	\$ 286.08	\$ 286.08
29			Push Button, EDWARDS #1786C-B	EA	1	0%	1	0.425	\$ 98.06	\$ 41.68	\$ 85.23	\$ 126.91	\$ 126.91
30			Transformer, EDWARDS #598	EA	1	0%	1	0.500	\$ 98.06	\$ 49.03	\$ 38.18	\$ 87.21	\$ 87.21
31			Speaker (Install Speaker Furnished by Owner)	EA	4	0%	4	0.750	\$ 98.06	\$ 73.55	\$ -	\$ 73.55	\$ 294.18
MISCELLANEOUS													
32			4-1/2" x 2-1/2" x 2-1/2" Junction Box With Single Gang Plaster Ring	EA	2	0%	2	0.250	\$ 98.06	\$ 24.52	\$ 7.89	\$ 32.41	\$ 64.81
												SUBTOTAL	\$ 13,965
												PROJECTED COST	\$32,465
OVERHEAD AND PROFIT												15%	\$4,870
INSURANCE												3%	\$974
CONTINGENCY												5%	\$1,623
TAX												10.6%	\$648
SUGGESTED BID													\$40,580