

GENERAL SUMMARY

Prepared for:

Project ID:

Scope: Communications

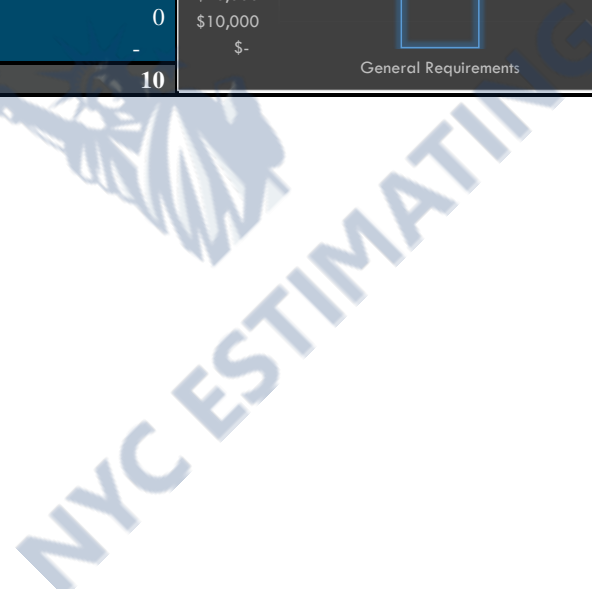
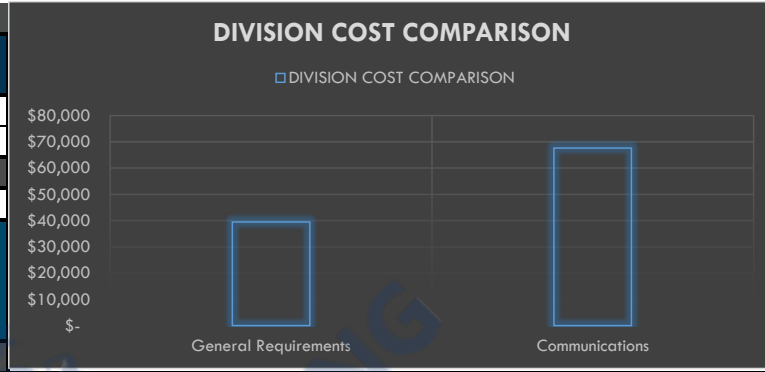
No. Of Floors: 1

Date: 10/16/23



NYC ESTIMATING

BUILDING GSF		13248	
DIVISION NO	DESCRIPTION	TOTAL DIV. COST	TOTAL DIV. COST (PER SF)
1000	General Requirements	\$ 39,500	\$ 3
27000	Communications	\$ 67,585	\$ 5
TOTAL TRADE COST		\$ 107,085	\$ 8
OVERHEAD AND PROFIT			
	15%	\$ 16,063	\$ 1.21
INSURANCE	3%	\$ 3,213	\$ 0
CONTINGENCY	5%	\$ 5,354	\$ 0
TAX	0.0%	\$ -	\$ -
SUGGESTED BID		\$ 131,714	\$ 10



DETAILED BREAKDOWN OF ITEMS

Prepared for:
Project ID:
Scope: Communications



NYC ESTIMATING

Date: **10/16/23**

SR #	Drawing #	Detail #	DESCRIPTION	UNIT	QUANTITY	WASTAGE	QUANTITY W/ WASTAGE	UNIT MANHOOUR	HOURLY WAGE	LABOR COST	MAT. COST	UNIT COST	SUB COST
GENERAL REQUIREMENTS													
1			Permits	LS	1	0%	1	0.000	\$ -	\$ -	\$ -		\$ -
2			Supervision and Coordination	LS	1	0%	1	0.000	\$ -	\$ -	\$ -	\$ 17,500.00	\$ 17,500.00
3			Submittals and Shop drawings	LS	1	0%	1	0.000	\$ -	\$ -	\$ -	\$ 1,500.00	\$ 1,500.00
4			Final Cleaning	LS	1	0%	1	0.000	\$ -	\$ -	\$ -	\$ 2,500.00	\$ 2,500.00
5			Mobilization Costs	LS	1	0%	1	0.000	\$ -	\$ -	\$ -	\$ 12,000.00	\$ 12,000.00
6			Temporary Control & Facilities	LS	1	0%	1	0.000	\$ -	\$ -	\$ -	\$ 5,000.00	\$ 5,000.00
7			Scaffolding	LS	1	0%	1	0.000	\$ -	\$ -	\$ -	\$ 1,000.00	\$ 1,000
												SUBTOTAL	\$ 39,500
COMMUNICATION													
TELECOMMUNICATION													
CONDUIT													
8			2" EMT Conduit	LF	92	10%	101	0.090	\$ 95.00	\$ 8.55	\$ 7.93	\$ 16.48	\$ 1,670.68
9			4" EMT Conduit	LF	152	10%	167	0.180	\$ 95.00	\$ 17.10	\$ 17.87	\$ 34.97	\$ 5,837.37
10			1" PVC SCH 40 Conduit	LF	33	10%	36	0.058	\$ 95.00	\$ 5.47	\$ 3.32	\$ 8.79	\$ 315.18
CONDUCTOR													
11			CAT6A Cable	LF	10259	10%	11285	0.011	\$ 95.00	\$ 1.03	\$ 0.25	\$ 1.28	\$ 14,399.22
12			Length Assumed 12-Strand 50-125MM Optical Fiber Cable	LF	150	10%	165	0.009	\$ 95.00	\$ 0.86	\$ 1.92	\$ 2.78	\$ 457.88
DEVICES													
13			2-Port Telecom Outlet, Wall Mounted	EA	27	0%	27	0.045	\$ 95.00	\$ 4.28	\$ 1.96	\$ 6.24	\$ 168.35
			RJ-45 Jacks	EA	54	0%	54	0.072	\$ 95.00	\$ 6.84	\$ 1.29	\$ 8.13	\$ 439.02
			4-11/16" Back Box	EA	27	0%	27	0.144	\$ 95.00	\$ 13.68	\$ 5.72	\$ 19.40	\$ 523.80
			4-Port Low Profile Faceplate	EA	27	0%	27	0.090	\$ 95.00	\$ 8.55	\$ 3.05	\$ 11.60	\$ 313.20
14			2-Port Wireless Access Point, Above Ceiling	EA	10	0%	10	0.045	\$ 95.00	\$ 4.28	\$ 1.96	\$ 6.24	\$ 62.35
			RJ-45 Jacks	EA	20	0%	20	0.072	\$ 95.00	\$ 6.84	\$ 1.29	\$ 8.13	\$ 162.60
			4-11/16" Back Box	EA	10	0%	10	0.144	\$ 95.00	\$ 13.68	\$ 5.72	\$ 19.40	\$ 194.00
			4-Port Low Profile Faceplate	EA	10	0%	10	0.090	\$ 95.00	\$ 8.55	\$ 3.05	\$ 11.60	\$ 116.00
15			3/4" Fire Retardant Plywood Backboard	LF	19	0%	19	0.029	\$ 95.00	\$ 2.74	\$ 2.10	\$ 4.84	\$ 89.56
16			3-Port Telecom Outlet, Wall Mounted	EA	2	0%	2	0.045	\$ 95.00	\$ 4.28	\$ 2.38	\$ 6.66	\$ 13.31
17			18" W Ladder Rack	LF	30	0%	30	0.018	\$ 95.00	\$ 1.71	\$ 2.30	\$ 4.01	\$ 119.50
18			Floor Box	EA	6	0%	6	0.378	\$ 95.00	\$ 35.91	\$ 125.99	\$ 161.90	\$ 971.40
			Audio/Visual Input Plate	EA	6	0%	6	0.144	\$ 95.00	\$ 13.68	\$ 5.72	\$ 19.40	\$ 523.80
			3-Port Telecom Outlet	EA	6	0%	6	0.045	\$ 95.00	\$ 4.28	\$ 2.38	\$ 6.66	\$ 39.93
19			IDF Rack 1B	EA	1	0%	1	1.350	\$ 95.00	\$ 128.25	\$ 970.00	\$ 1,098.25	\$ 1,098.25
			19"x7'-0" Two Post Equipment Rack	EA	2	0%	2	1.890	\$ 95.00	\$ 179.55	\$ 318.95	\$ 498.50	\$ 997.00
			6" W Double Sided Vertical Cable Management Panel	EA	2	0%	2	1.125	\$ 95.00	\$ 106.88	\$ 454.99	\$ 561.87	\$ 1,123.73
			2-RU RMFU	EA	2	0%	2	0.765	\$ 95.00	\$ 72.68	\$ 122.00	\$ 194.68	\$ 389.35
			48-Port Station Patch Panel For Wireless AP	EA	2	0%	2	0.900	\$ 95.00	\$ 85.50	\$ 82.66	\$ 168.16	\$ 336.32
			48-Port Station Patch Panel	EA	3	0%	3	0.900	\$ 95.00	\$ 85.50	\$ 82.66	\$ 168.16	\$ 504.48
			2-RU Horizontal Cable Management Panel	EA	4	0%	4	0.585	\$ 95.00	\$ 55.58	\$ 43.72	\$ 99.30	\$ 397.18
			24-Port Voice Patch Panel	EA	1	0%	1	0.450	\$ 95.00	\$ 42.75	\$ 203.00	\$ 245.75	\$ 245.75
			Ethernet Network Switch	EA	6	0%	6	0.293	\$ 95.00	\$ 27.79	\$ 38.55	\$ 66.34	\$ 398.03
SECURITY													
CONDUIT													
20			3/4" EMT Conduit	LF	1708	10%	1879	0.056	\$ 95.00	\$ 5.30	\$ 1.55	\$ 6.85	\$ 12,871.66
21			1" EMT Conduit	LF	30	10%	33	0.063	\$ 95.00	\$ 5.99	\$ 3.15	\$ 9.14	\$ 305.88
22			2" EMT Conduit	LF	152	10%	167	0.090	\$ 95.00	\$ 8.55	\$ 7.93	\$ 16.48	\$ 2,747.48
CONDUCTOR													
23			CAT6A Cable	LF	366	10%	403	0.011	\$ 95.00	\$ 1.03	\$ 0.25	\$ 1.28	\$ 513.63
24			6#18 Shielded Cable	LF	106	10%	116	0.013	\$ 95.00	\$ 1.20	\$ 0.78	\$ 1.98	\$ 230.11

**E2.01, T6.01,
T6.02 & T8.01**

DETAILED BREAKDOWN OF ITEMS

Prepared for:
Project ID:
Scope: Communications



NYC ESTIMATING

Date: **10/16/23**

SR #	Drawing #	Detail #	DESCRIPTION	UNIT	QUANTITY	WASTAGE	QUANTITY W/ WASTAGE	UNIT MANHOURL	HOURLY WAGE	LABOR COST	MAT. COST	UNIT COST	SUB COST
25			#22 CU THHN/THWN	LF	1164	10%	1280	0.003	\$ 95.00	\$ 0.26	\$ 0.15	\$ 0.41	\$ 520.29
26			#18 CU THHN/THWN	LF	916	10%	1008	0.005	\$ 95.00	\$ 0.43	\$ 0.20	\$ 0.63	\$ 632.59
27			#16 CU THHN/THWN	LF	1637	10%	1800	0.005	\$ 95.00	\$ 0.51	\$ 0.32	\$ 0.83	\$ 1,499.62
28			#12 CU THHN/THWN	LF	328	10%	360	0.006	\$ 95.00	\$ 0.60	\$ 0.52	\$ 1.12	\$ 403.03
			DEVICES										
29			Push Button For Automatic Door Opener	EA	4	0%	4	0.315	\$ 95.00	\$ 29.93	\$ 58.99	\$ 88.92	\$ 355.66
30			1-Port Outlet, Ceiling Mounted (For Camera)	EA	6	0%	6	0.072	\$ 95.00	\$ 6.84	\$ 1.29	\$ 8.13	\$ 48.78
			RJ-45 Jacks	EA	6	0%	6	0.144	\$ 95.00	\$ 13.68	\$ 5.72	\$ 19.40	\$ 116.40
			4-11/16" Back Box	EA	6	0%	6	0.090	\$ 95.00	\$ 8.55	\$ 3.05	\$ 11.60	\$ 69.60
			4-Port Low Profile Faceplate	EA	6	0%	6	0.090	\$ 95.00	\$ 8.55	\$ 3.05	\$ 11.60	\$ 69.60
31			Auto Operator Security Button Switch, Wall Mounted	EA	4	0%	4	0.450	\$ 95.00	\$ 42.75	\$ 65.12	\$ 107.87	\$ 431.48
32			Credential Card Reader	EA	1	0%	1	0.090	\$ 95.00	\$ 8.55	\$ 49.00	\$ 57.55	\$ 57.55
			4" Square Back Box	EA	6	0%	6	0.180	\$ 95.00	\$ 17.10	\$ 1.79	\$ 18.89	\$ 113.34
33			Door Position Switch	EA	14	0%	14	0.090	\$ 95.00	\$ 8.55	\$ 6.90	\$ 15.45	\$ 216.30
34			Electric Field Lockset (Door Hardware Power Supply By DIV 08)	EA	2	0%	2	1.250	\$ 95.00	\$ 118.75	\$ 255.00	\$ 373.75	\$ 747.50
35			PIR Motion Detector, Wall Mounted	EA	10	0%	10	0.270	\$ 95.00	\$ 25.65	\$ 21.50	\$ 47.15	\$ 471.50
36			Request To Exist, Integral Micro Switch	EA	2	0%	2	0.144	\$ 95.00	\$ 13.68	\$ 3.99	\$ 17.67	\$ 35.34
			AUDIO/VISUAL SYSTEM										
			CONDUIT										
37			1-1/4" EMT Conduit	LF	645	10%	710	0.072	\$ 95.00	\$ 6.84	\$ 4.25	\$ 11.09	\$ 7,868.36
			CONDUCTOR										
38			#18 CU THHN/THWN	LF	1290	10%	1419	0.005	\$ 95.00	\$ 0.43	\$ 0.20	\$ 0.63	\$ 890.42
			DEVICES										
39			Flat Panel Display, Wall Mounted	EA	10	0%	10	0.900	\$ 95.00	\$ 85.50	\$ 59.00	\$ 144.50	\$ 1,445.00
40			Recessed Wall Box	EA	14	0%	14	0.378	\$ 95.00	\$ 35.91	\$ 10.50	\$ 46.41	\$ 649.74
			Audio/Visual Input Plate	EA	14	0%	14	0.293	\$ 95.00	\$ 27.79	\$ 107.99	\$ 135.78	\$ 1,900.89
			3-Port Telecom Outlet	EA	14	0%	14	0.257	\$ 95.00	\$ 24.37	\$ 9.20	\$ 33.57	\$ 469.95
			MISCELLANEOUS										
41			Junction Box	EA	2	0%	2	0.450	\$ 95.00	\$ 42.75	\$ 16.99	\$ 59.74	\$ 119.48
			SAW CUT										
42			Saw Cut & Repair Concrete Floor For Conduit Installation	LF	33	0%	33	0.000	\$ 95.00	\$ -	\$ -	\$ -	\$ -
												SUBTOTAL	\$ 67,585
												PROJECTED COST	\$107,085
OVERHEAD AND PROFIT												15%	\$16,063
INSURANCE												3%	\$3,213
CONTINGENCY												5%	\$5,354
TAX												0.0%	\$0
SUGGESTED BID													\$131,714