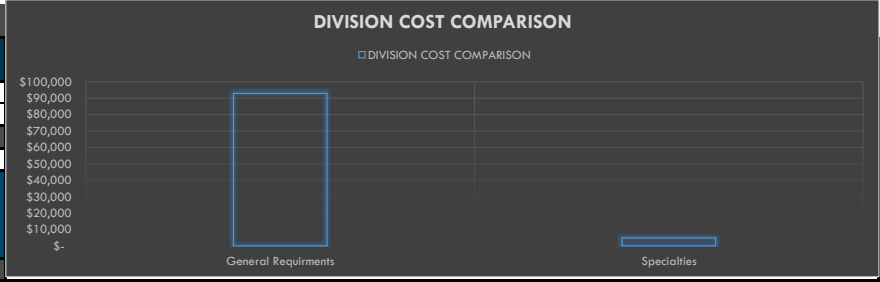


GENERAL SUMMARY

Prepared for:
 Project ID:
 Scope: Specialties
 No. Of Floors: 1
 Date: 16-Dec-23



BUILDING GSF		2,300	
DIVISION NO.	DESCRIPTION	TOTAL DIV. COST	TOTAL DIV. COST (PER SF)
1000	General Requirments	\$ 93,000	\$ 40.43
10000	Specialties	\$ 4,953	\$ 2.15
TOTAL TRADE COST		\$ 97,953	\$ 43
OVERHEAD AND PROFIT			
	10%	\$ 9,795	\$ 4.26
	INSURANCE 3%	\$ 2,939	\$ 1
	CONTINGENCY 5%	\$ 4,898	\$ 2
	TAX 10%	\$ 0	\$ 4
TOTAL TRADE COST		\$ 115,584	\$ 55



DETAILED BREAKDOWN OF ITEMS

Prepared for:
Project ID:
Scope: Specialties



NYC ESTIMATING

Date: 16-Dec-23

SR #	Drawing #	Detail #	DESCRIPTION	UNIT	QUANTITY	WASTAGE	QUANTITY W/ WASTAGE	UNIT MANHOUR	HOURLY WAGE	LABOR COST	MAT. COST	UNIT COST	SUB COST
GENERAL REQUIREMENTS													
1			Permits	LS	1	0%	1	0.000	\$ -	\$ -	\$ -	\$ 3,500.00	\$ 3,500.00
2			Supervision and Coordination	LS	1	0%	1	0.000	\$ -	\$ -	\$ -	\$ 43,000.00	\$ 43,000.00
3			Submittals and Shop drawings	LS	1	0%	1	0.000	\$ -	\$ -	\$ -	\$ 2,000.00	\$ 2,000.00
4			Final Cleaning	LS	1	0%	1	0.000	\$ -	\$ -	\$ -	\$ 4,000.00	\$ 4,000.00
5			Mobilization Costs	LS	1	0%	1	0.000	\$ -	\$ -	\$ -	\$ 29,000.00	\$ 29,000.00
6			Temporary Control & Facilities	LS	1	0%	1	0.000	\$ -	\$ -	\$ -	\$ 8,500.00	\$ 8,500.00
7			Scaffolding	LS	1	0%	1	0.000	\$ -	\$ -	\$ -	\$ 3,000.00	\$ 3,000.00
												SUBTOTAL	\$ 93,000
SPECIALTIES													
GRAPHIC													
8	D-4	SCHEDULE	Graphic- Restroom- Men	EA	1	0%	1	0.325	\$ 60.00	\$ 19.50		\$ 19.50	\$ 20
9			Graphic- Restroom- Women	EA	1	0%	1	0.325	\$ 60.00	\$ 19.50		\$ 19.50	\$ 20
10			Graphic- Coleslaw Shuffle	EA	1	0%	1	0.325	\$ 60.00	\$ 19.50		\$ 19.50	\$ 20
11			Graphic- Biscuit Experience	EA	1	0%	1	0.325	\$ 60.00	\$ 19.50		\$ 19.50	\$ 20
12			Graphic- Flour Power	EA	1	0%	1	0.325	\$ 60.00	\$ 19.50		\$ 19.50	\$ 20
13			Graphic- All Fried Up	EA	1	0%	1	0.325	\$ 60.00	\$ 19.50		\$ 19.50	\$ 20
14			Graphic- 12 Hour Marination	EA	1	0%	1	0.325	\$ 60.00	\$ 19.50		\$ 19.50	\$ 20
15			Graphic- Famous Louisiana Chicken	EA	1	0%	1	0.325	\$ 60.00	\$ 19.50		\$ 19.50	\$ 20
16			Graphic- MP Biscuit	EA	1	0%	1	0.325	\$ 60.00	\$ 19.50		\$ 19.50	\$ 20
17			Graphic- MP Chicken	EA	1	0%	1	0.325	\$ 60.00	\$ 19.50		\$ 19.50	\$ 20
18			Graphic- FSC Logo	EA	1	0%	1	0.325	\$ 60.00	\$ 19.50		\$ 19.50	\$ 20
19			Graphic- QR Poppy	EA	1	0%	1	0.325	\$ 60.00	\$ 19.50		\$ 19.50	\$ 20
20			Graphic- Beauty Shots- Pieces	EA	1	0%	1	0.325	\$ 60.00	\$ 19.50		\$ 19.50	\$ 20
21	Graphic- Beauty Shots- Sandwich	EA	1	0%	1	0.325	\$ 60.00	\$ 19.50		\$ 19.50	\$ 20		
<i>Note: Supplied By Owner & Installed By GC</i>													
FIRE EXTINGUISHER													
22	K-1	SCHEDULE	Fire Extinguisher 10 LBS ABC	EA	3	0%	3	0.540	\$ 60.00	\$ 32.40	\$ -	\$ 32.40	\$ 97
23			Fire Extinguisher 6 Litre Class K	EA	1	0%	1	0.450	\$ 60.00	\$ 27.00	\$ -	\$ 27.00	\$ 27
<i>Note: Supplied By Owner & Installed GC</i>													
CORNER GUARD													
24	A-2		2" x 2" 16 GA Corner Guard	EA	12	0%	12	0.220	\$ 60.00	\$ 13.20	\$ 37.60	\$ 50.80	\$ 610
BATH ACCESSORIES													
25	A-15	Plan Notes	Heavy Duty Clothes Hook Mfg: Bobrick Model #: B - 2116	EA	2	0%	2	0.125	\$ 60.00	\$ 7.50	\$ 22.10	\$ 29.60	\$ 59
26			Toilet Paper Dispenser Mfg: Bobrick Model #: B - 2890	EA	2	0%	2	0.425	\$ 60.00	\$ 25.50	\$ 69.25	\$ 94.75	\$ 190
27			18" Grab Bar Mfg: Gamco 150-S x 18"	EA	2	0%	2	0.380	\$ 60.00	\$ 22.80	\$ 35.00	\$ 57.80	\$ 116
28			42" Grab Bar Mfg: Gamco 150-S x 42"	EA	2	0%	2	0.400	\$ 60.00	\$ 24.00	\$ 69.55	\$ 93.55	\$ 187
29			36" Grab Bar Mfg: Gamco 150-S x 36"	EA	2	0%	2	0.390	\$ 60.00	\$ 23.40	\$ 61.00	\$ 84.40	\$ 169
30			18" x 36" Channel Frame Mirror Mfg: Gamco C - 18 x 36	EA	2	0%	2	0.765	\$ 60.00	\$ 45.90	\$ 128.50	\$ 174.40	\$ 349
31			Paper Towel Dispenser Mfg: Bobrick Model #: B - 262	EA	2	0%	2	0.435	\$ 60.00	\$ 26.10	\$ 76.25	\$ 102.35	\$ 205

DETAILED BREAKDOWN OF ITEMS

Prepared for:
Project ID:
Scope: Specialties



NYC ESTIMATING

Date: 16-Dec-23

SR #	Drawing #	Detail #	DESCRIPTION	UNIT	QUANTITY	WASTAGE	QUANTITY W/ WASTAGE	UNIT MANHOUR	HOURLY WAGE	LABOR COST	MAT. COST	UNIT COST	SUB COST
32	A-15	Plan Notes	Soap Dispenser Mfg: Bobrick Model #: B - 2111	EA	2	0%	2	0.480	\$ 60.00	\$ 28.80		\$ 28.80	\$ 58
33			Baby Changing Station Mfg: Gamco BCS-2	EA	1	0%	1	0.500	\$ 60.00	\$ 30.00	\$ 385.04	\$ 415.04	\$ 415
34			Sanitary Napkin Disposal Mfg: Bobrick Model #: B-270	EA	1	0%	1	0.395	\$ 60.00	\$ 23.70	\$ 55.66	\$ 79.36	\$ 79
35			Free Standing Trash Can Mfg: HLS Commercial Model #: HLSS13R	EA	2	0%	2	0.150	\$ 60.00	\$ 9.00	\$ 45.62	\$ 54.62	\$ 109
36			Door Bumper (Surface Mounted) Mfg: Bobrick Model #: B - 6877	EA	2	0%	2	0.120	\$ 60.00	\$ 7.20	\$ 12.56	\$ 19.76	\$ 40
			<i>Note: Except Soap Dispenser All Accessories are Furnished & Installed by GC.</i>										
MISCELLANEOUS													
37	A-2, A-3	A-9	Trash Can	EA	2	0%	2	0.150	\$ 60.00	\$ 9.00	\$ 35.12	\$ 44.12	\$ 88
38			Stainless Steel Wall Cap	LF	38	5%	40	0.025	\$ 60.00	\$ 1.50	\$ 2.39	\$ 3.89	\$ 155
39			Stainless Steel Shroud For Coke Bundles (5'-4" H)	EA	1	0%	1	0.250	\$ 60.00	\$ 15.00	\$ 115.32	\$ 130.32	\$ 130
40			15'-6" H Roof Ladder Details: Ladder Brackets made from 9" x 4" x 1/2" Steel Angle, Ladder Stringer from 2-1/2" x 3/8" Flat Steel Bar, Ladder Rungs from 3/4" Dia Steel Bar weld to Steel Stringers @ 1'-0" O.C	EA	1	0%	1	4.84	\$ 60.00	\$ 290.16	\$ 1,307.59	\$ 1,597.75	\$ 1,598
												SUBTOTAL	\$ 4,953
												PROJECTED COST	\$97,953
OVERHEAD AND PROFIT												10%	\$9,795
INSURANCE												3%	\$2,939
CONTINGENCY												5%	\$4,898
TAX												10%	\$0
SUGGESTED BID													\$115,584